

CARTA DE LLEGADA NORMALIZADA
VUELO POR INSTRUMENTOS (STAR)-OACI

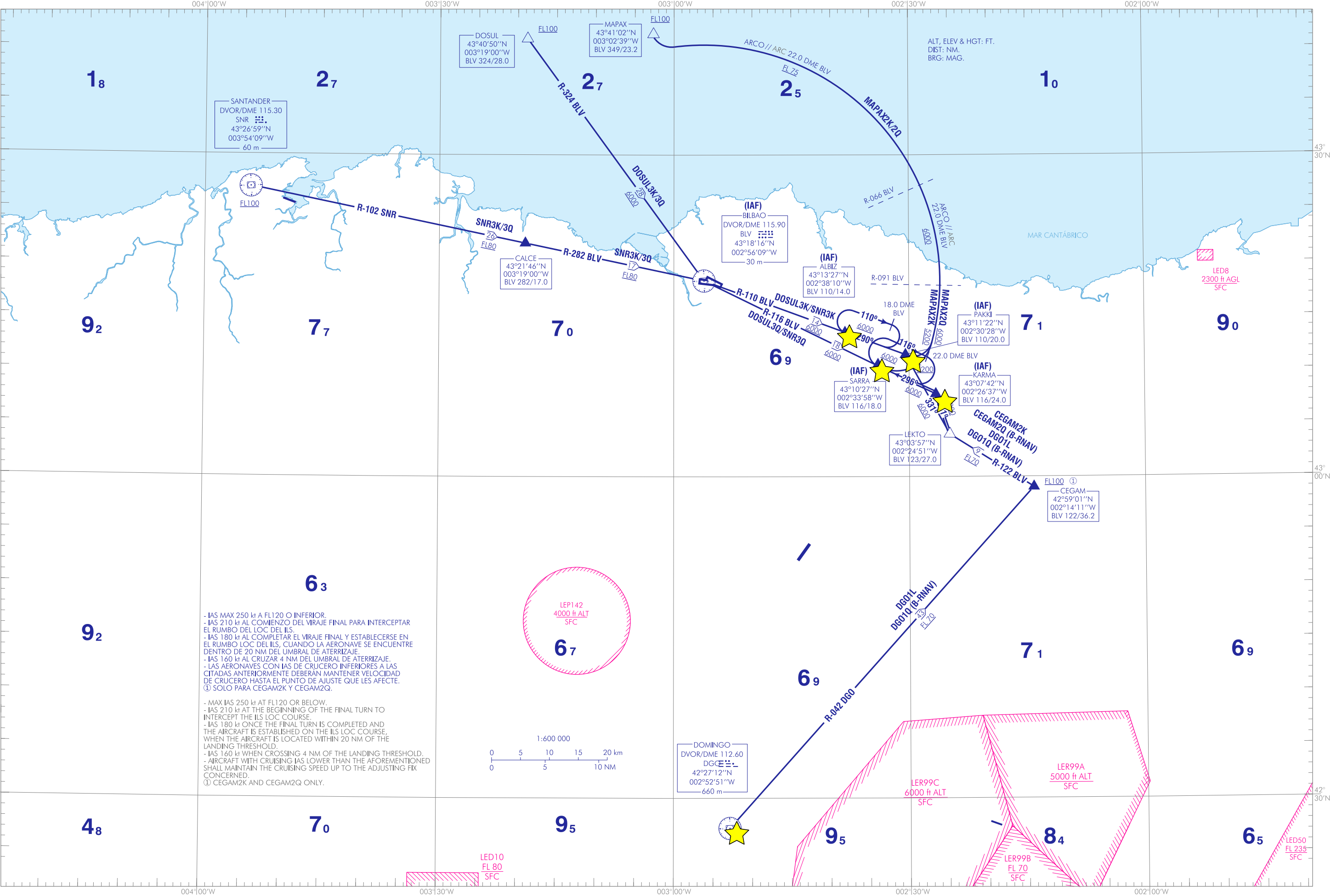
TA 6000
VAR 0° (2020)

APP 127.450
TWR 118.500

BILBAO
RWY 30
DOSUL3K/3Q

CEGAM2K/2Q
MAPAX2K/2Q
GO1L/1Q
SNR3K/3Q

CAMBIO: DECLINACIÓN MAGNÉTICA, RUMBOS Y RADIALES, AMA, COORD DVOR EN LUGAR DE DME DGO Y SNR, NOTAS.
CHANGES: MAGNETIC VARIATION, HEADINGS AND RADIALS, AMA, COORD DVOR INSTEAD OF DME DGO AND SNR, NOTES.



INTENCIONADAMENTE EN BLANCO
INTENTIONALLY BLANK

BILBAO AD

LLEGADAS NORMALIZADAS POR INSTRUMENTOS (STAR)

PISTA 30

- ➔ LLEGADA CEGAM DOS KILO (CEGAM2K)
CEGAM, LEKTO, PAKKI (IAF), ALBIZ (IAF).
- ➔ LLEGADA CEGAM DOS QUEBEC (CEGAM2Q) B-RNAV. Se requiere aprobación B-RNAV
CEGAM, LEKTO, KARMA (IAF), SARRA (IAF).
- LLEGADA DOMINGO UNO LIMA (DGO1L)
DVOR/DME DGO, CEGAM, LEKTO, PAKKI (IAF), ALBIZ (IAF).
- LLEGADA DOMINGO UNO QUEBEC (DGO1Q) B-RNAV. Se requiere aprobación B-RNAV
DVOR/DME DGO, CEGAM, LEKTO, KARMA (IAF), SARRA (IAF).
- ➔ LLEGADA DOSUL TRES KILO (DOSUL3K)
DOSUL, DVOR/DME BLV, ALBIZ (IAF).
- ➔ LLEGADA DOSUL TRES QUEBEC (DOSUL3Q)
DOSUL, DVOR/DME BLV, SARRA (IAF).
- ➔ LLEGADA MAPAX DOS KILO (MAPAX2K)
MAPAX, ARCO 22.0 DME BLV, PAKKI (IAF).
- ➔ LLEGADA MAPAX DOS QUEBEC (MAPAX2Q)
MAPAX, ARCO 22.0 DME BLV, SARRA (IAF).
- ➔ LLEGADA SANTANDER TRES KILO (SNR3K)
DVOR/DME SNR, CALCE, DVOR/DME BLV, ALBIZ (IAF).
- ➔ LLEGADA SANTANDER TRES QUEBEC (SNR3Q)
DVOR/DME SNR, CALCE, DVOR/DME BLV, SARRA (IAF).

STANDARD INSTRUMENT ARRIVALS (STAR)

RUNWAY 30

- CEGAM TWO KILO ARRIVAL (CEGAM2K)
CEGAM, LEKTO, PAKKI (IAF), ALBIZ (IAF).
- CEGAM TWO QUEBEC ARRIVAL (CEGAM2Q) B-RNAV. B-RNAV approval required
CEGAM, LEKTO, KARMA (IAF), SARRA (IAF).
- DOMINGO ONE LIMA ARRIVAL (DGO1L)
DVOR/DME DGO, CEGAM, LEKTO, PAKKI (IAF), ALBIZ (IAF).
- DOMINGO ONE QUEBEC ARRIVAL (DGO1Q) B-RNAV. B-RNAV approval required.
DVOR/DME DGO, CEGAM, LEKTO, KARMA (IAF), SARRA (IAF).
- DOSUL THREE KILO ARRIVAL (DOSUL3K)
DOSUL, DVOR/DME BLV, ALBIZ (IAF).
- DOSUL THREE QUEBEC ARRIVAL (DOSUL3Q)
DOSUL, DVOR/DME BLV, SARRA (IAF).
- MAPAX TWO KILO ARRIVAL (MAPAX2K)
MAPAX, ARC 22.0 DME BLV, PAKKI (IAF).
- MAPAX TWO QUEBEC ARRIVAL (MAPAX2Q)
MAPAX, ARC 22.0 DME BLV, SARRA (IAF).
- SANTANDER THREE KILO ARRIVAL (SNR3K)
DVOR/DME SNR, CALCE, DVOR/DME BLV, ALBIZ (IAF).
- SANTANDER THREE QUEBEC ARRIVAL (SNR3Q)
DVOR/DME SNR, CALCE, DVOR/DME BLV, SARRA (IAF).

INTENCIONADAMENTE EN BLANCO
INTENTIONALLY BLANK